



'TRACC-ING' TURTLES AND REBUILDING REEFS

CORAL REEF CONSERVATION IN THE SULU-CELEBES SEA

DR STUART MAUDLING & DR CLARE MAUDLING



ENVIRONMENTAL RESTORATION: TRACC

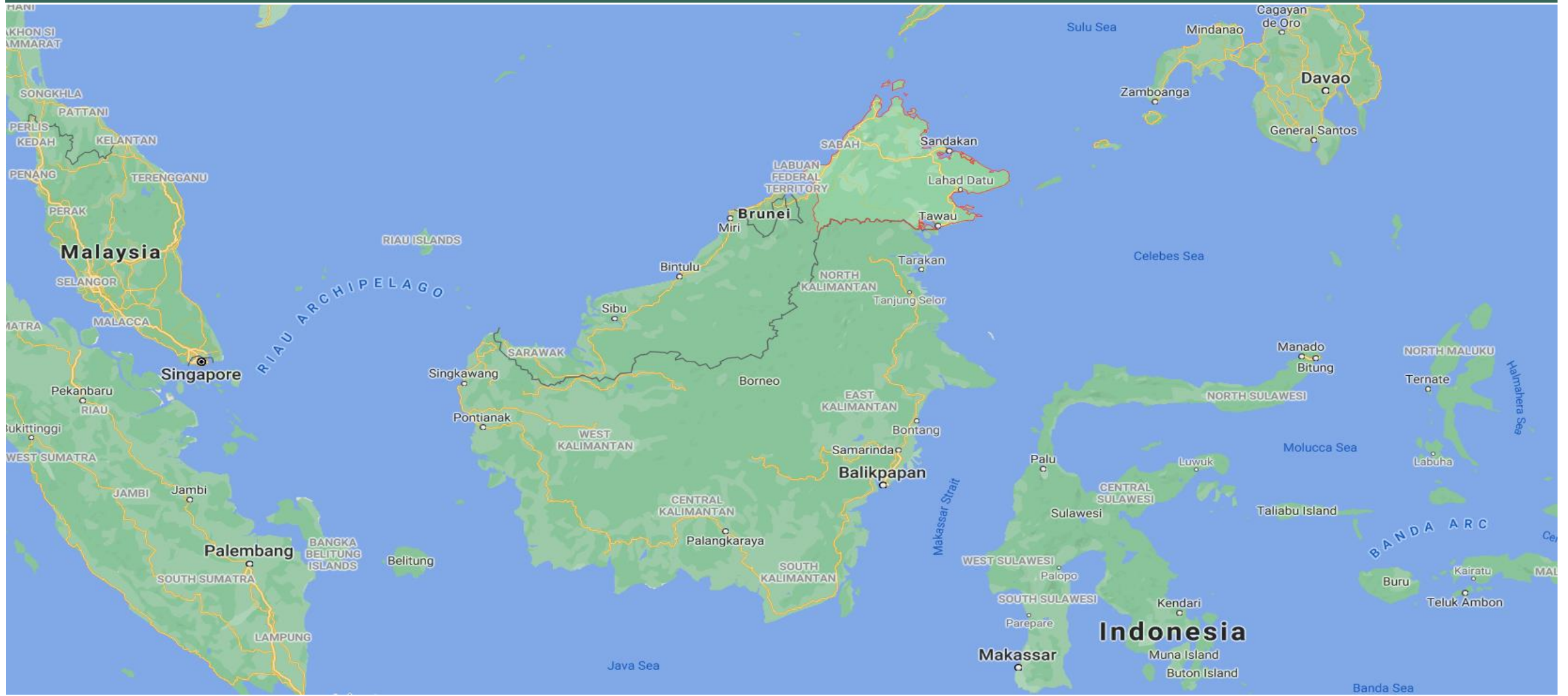


- TRACC is an organisation based on Pom Pom Island.
- It works to restore damaged reefs around the island.
- TRACC also works on outreach programmes with the local population to educate on fishing practices and marine pollution.
- It has also tried to work with finding alternative economic outlets for local people.



POM POM ISLAND

MALAYSIA AND BORNEO



SABAH



SEMPORNA AND ISLANDS





BOMB FISHING

- Destruction of reefs with homemade explosives.
- Dangerous for fishermen.
- Extremely destructive to habitats and populations.
- Cyanide fishing also common.

Photo credit: Christian Loader, Scubazoo/TRACC



BOMBED REEF

- Reef bombing destroys the corals, and therefore fish habitats.
- Reefs often do not recover.

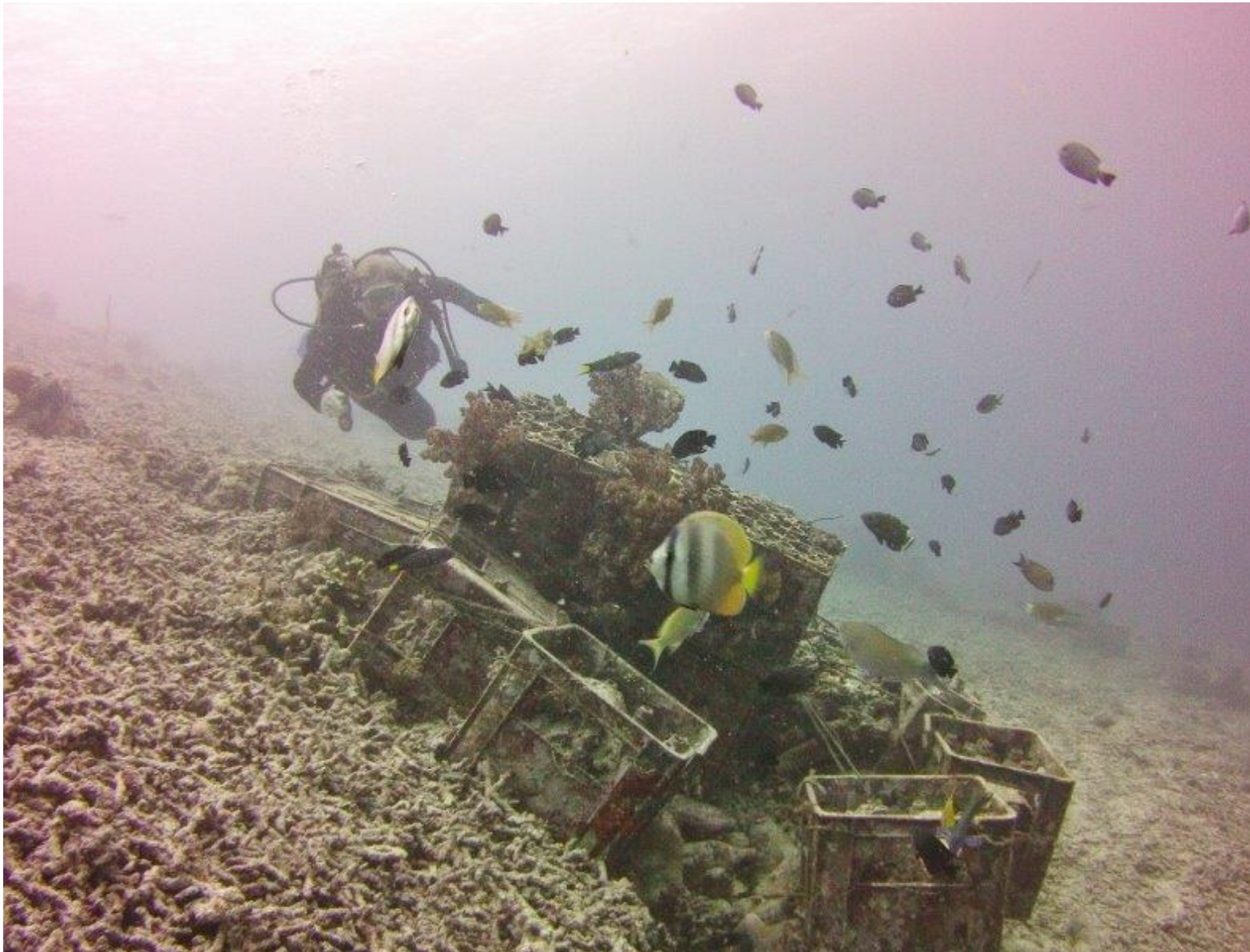
Photo credit: Christian Loader, Scubazoo/TRACC

EASTERN PLATEAU



RUBBLE SLOPE

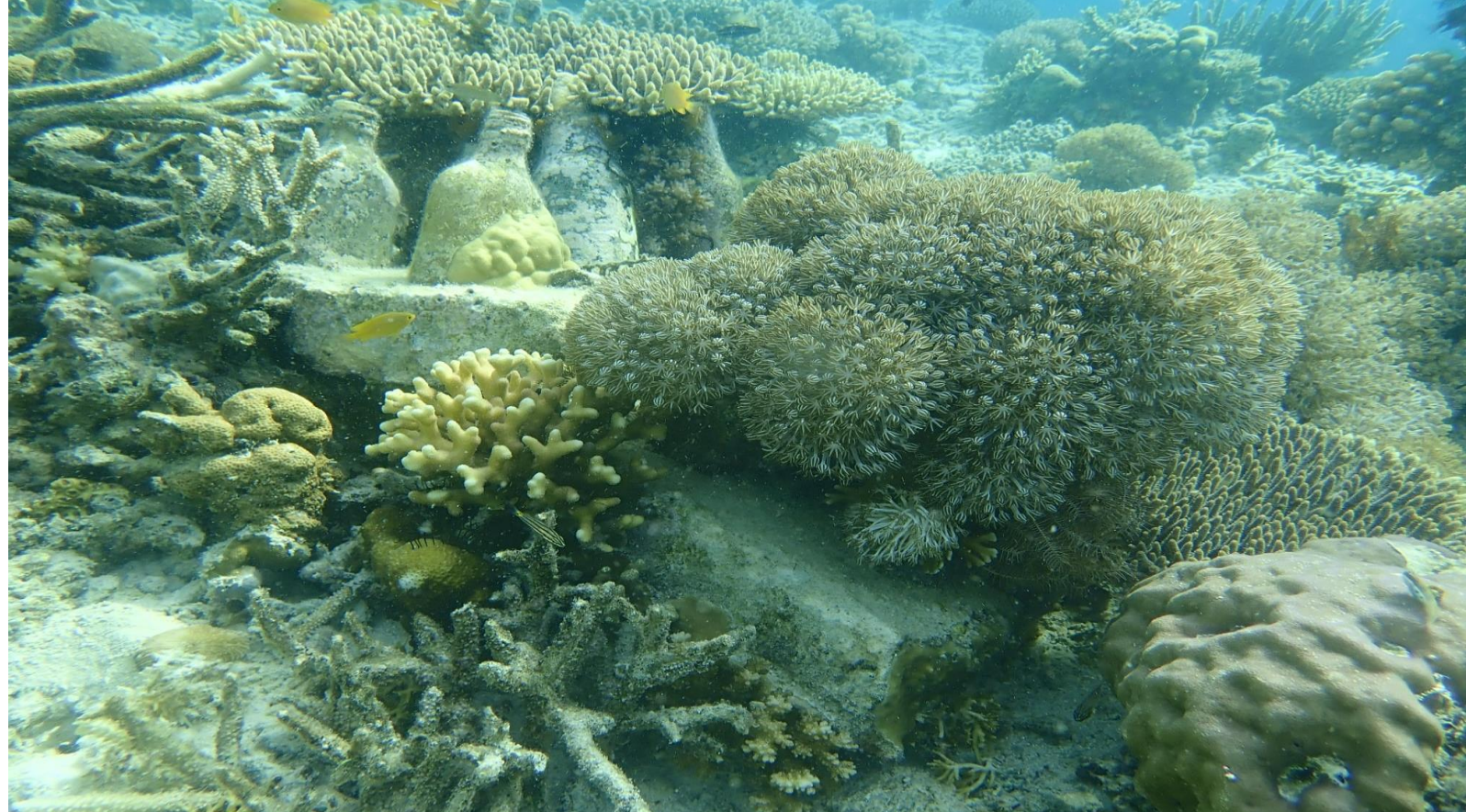




RUBBLE SLOPE AND ARTIFICIAL REEFS

- Unstable rubble stops coral from recruiting
- Artificial reefs created to provide a stable habitat

Photo credit: TRACC



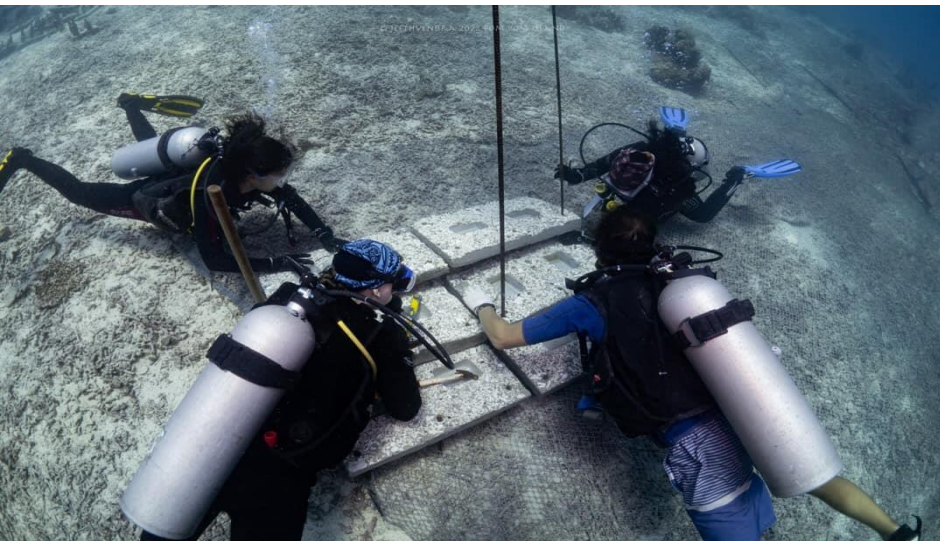
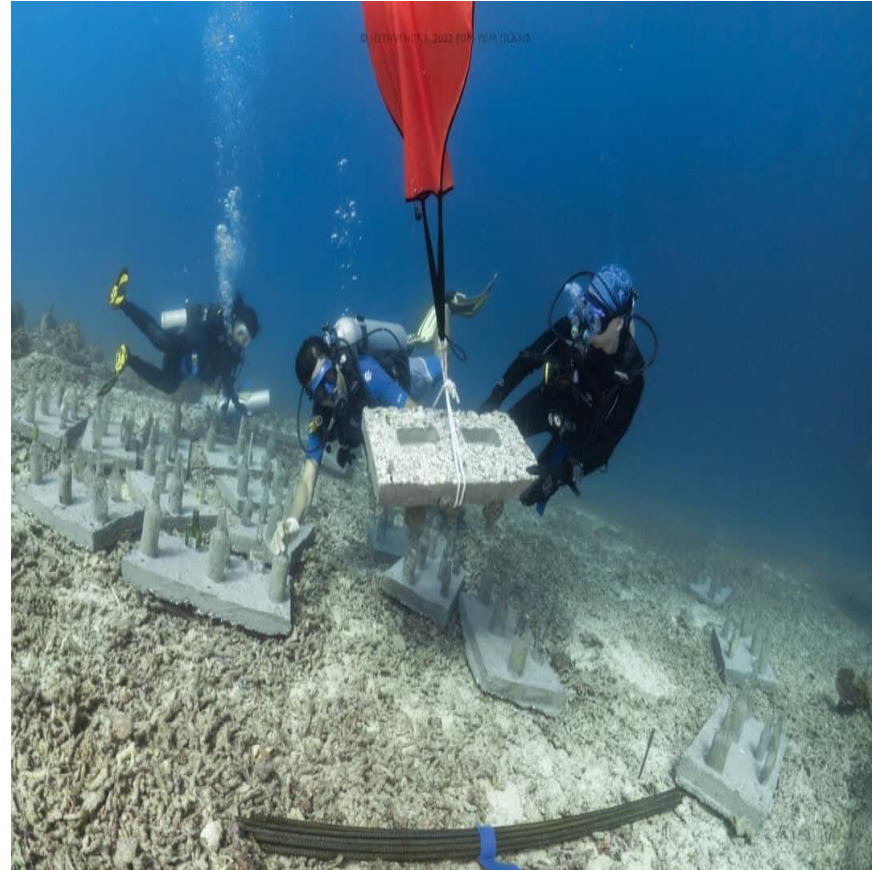
TRACC REEF REBUILDING BOTTLE REEF



TRACC REEF REBUILDING
CRATE, STEP, ARC



BUILDING STEP REEFS



BUILDING STEP REEFS

STEP REEF COMPLETE!

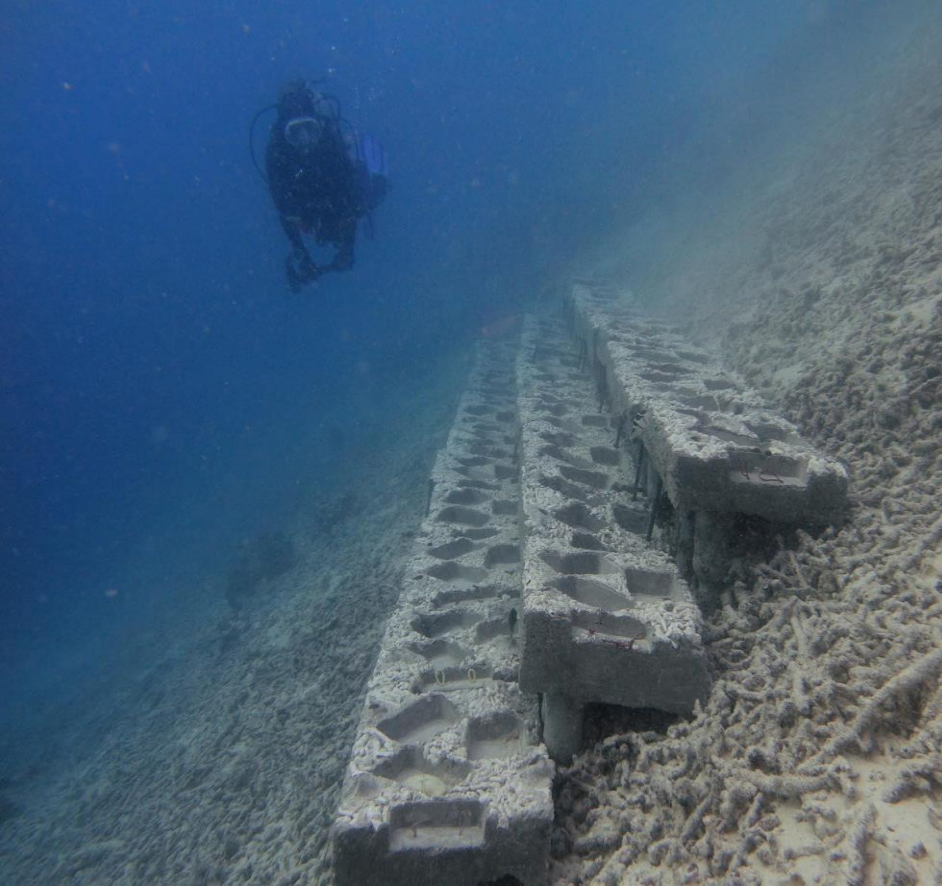




RESEEDING REEFS WITH CORAL FRAGMENTS



RESEEDING REEFS WITH CORAL FRAGMENTS



RESEEDING REEFS WITH CORAL
FRAGMENTS



CROWN OF THORNS STARFISH COLLECTION

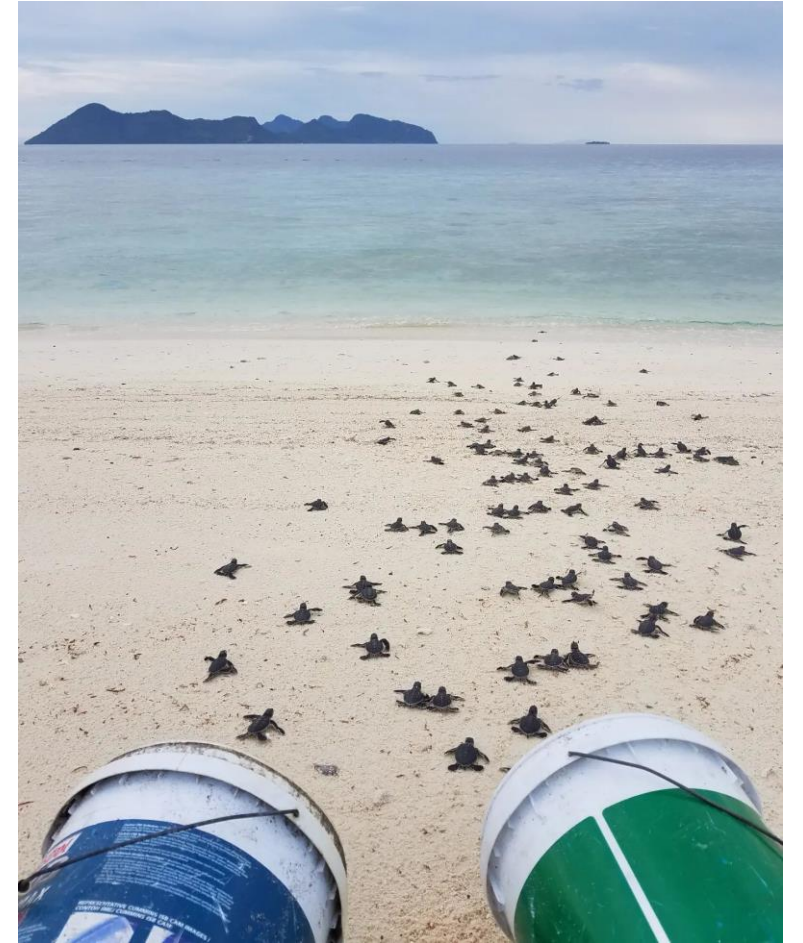


CROWN OF THORNS STARFISH COLLECTION

TURTLES – GREEN AND HAWKSBILL



TURTLES - HATCHERIES



TURTLE ID



THE BAJAU PEOPLE

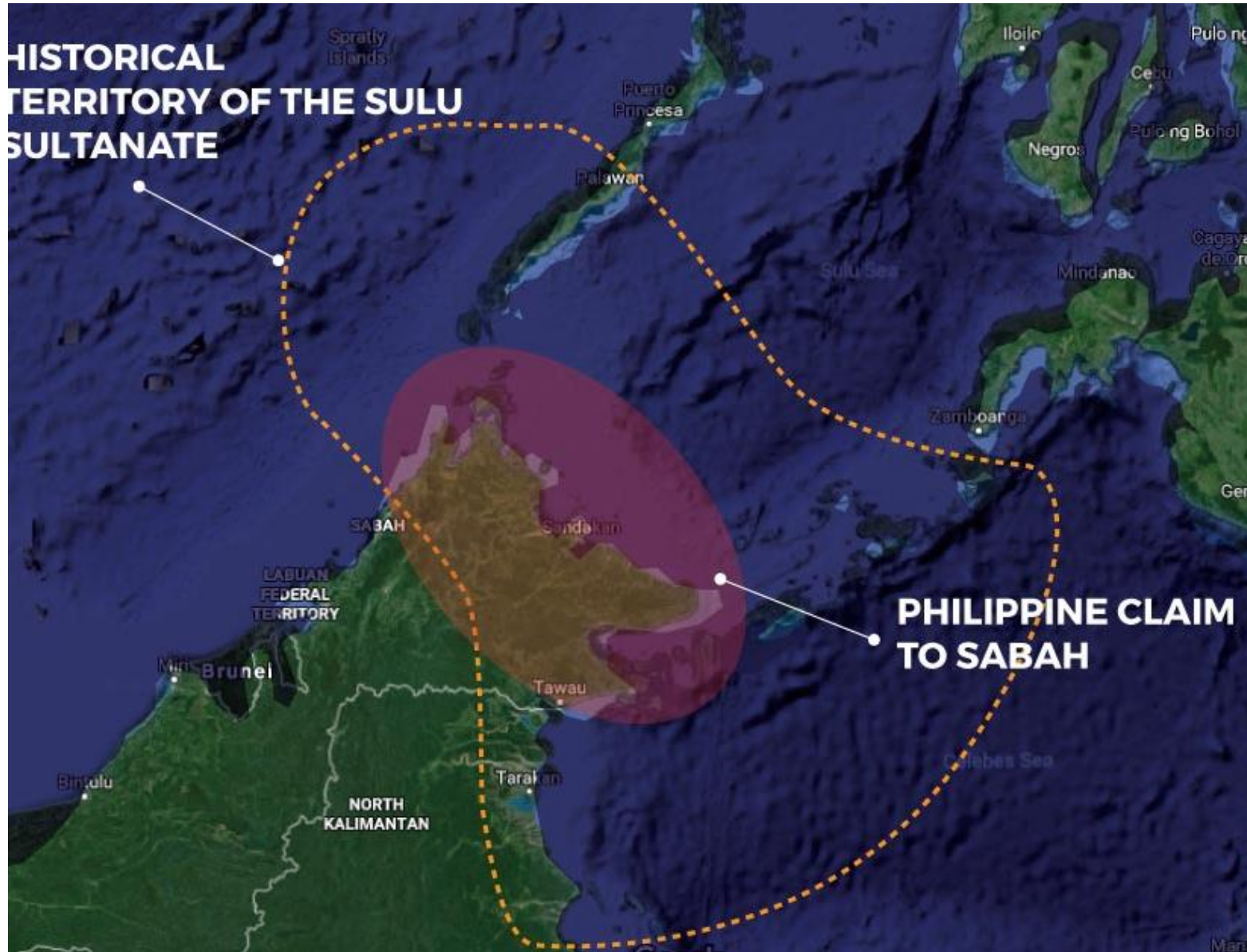


- 'Bajau' refers to a number of indigenous groups in Malaysian Borneo, usually referred to as a whole as the 'Sama Bajau'.
- They adopted a nomadic maritime lifestyle across the coasts of what is now the Philippines, Borneo and Indonesia, moving between the islands in the Sulu sea.
- Their traditional livelihood was fishing and strand-line collection of marine products.

BAJAU-LAUT AND STATELESSNESS

- With the creation of the Federation of Malaysia, the Bajau-Laut found themselves outside the Malaysian definitions of 'Malay' and were not considered citizens.
- The Bajau-Laut are considered by the Malay government to be a Filipino people, while the Philippine government considers them to be Malay. This results in issues around the immigration and deportation policies of both countries as periodic raids on 'illegals' results in Bajau-Laut peoples being deported from Malaysia to the Philippines, and vice-versa.
- Without citizenship, or any route to citizenship in Malaysia, the Bajau-Laut are unable to access education, healthcare and legitimate employment.
- They mostly rely on pursuing traditional economic outlets, such as fishing and strandline gathering, as well as irregular illegal work.

HISTORICAL TERRITORY OF THE SULU SULTANATE

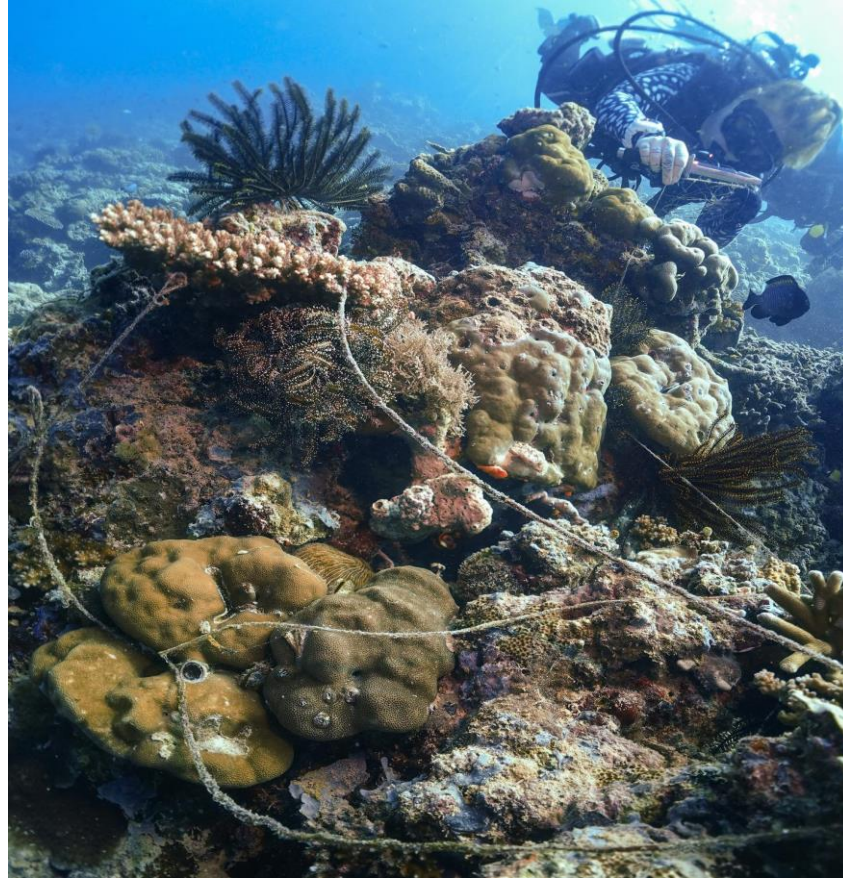


PHILIPPINE CLAIM TO SABAH

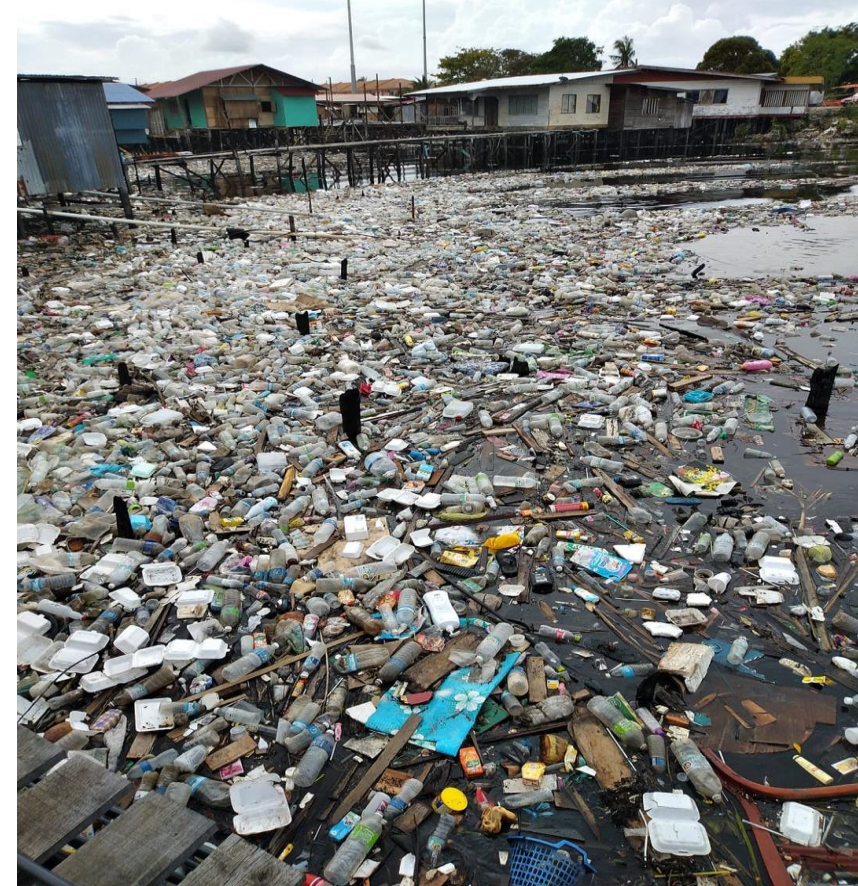
SULU SULTANATE CLAIMS

SABAH





OTHER THREATS – MARINE TRASH



OTHER THREATS – MARINE TRASH



WWW.TRACC.ORG

facebook.com/tracc.borneo

s_maudling@redmaidshigh.co.uk
c.l.maudling2@exeter.ac.uk