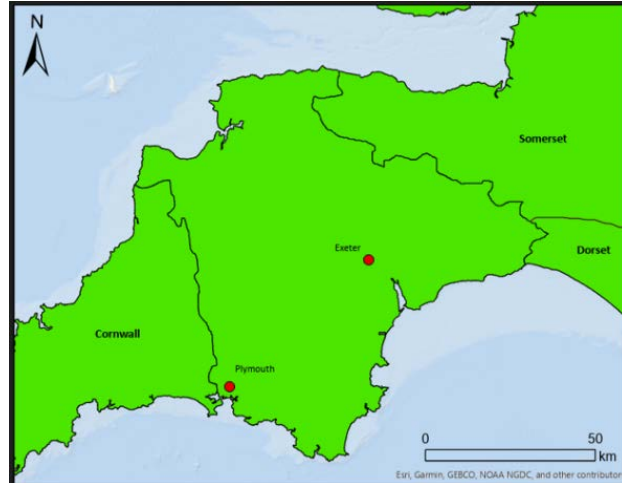


The Dynamic Coast...

Where is Start Bay?

1. Start Bay is located on the south coast of Devon. On the map below, locate and label:

- (a) The county of Devon
- (b) Start Bay
- (c) The English Channel

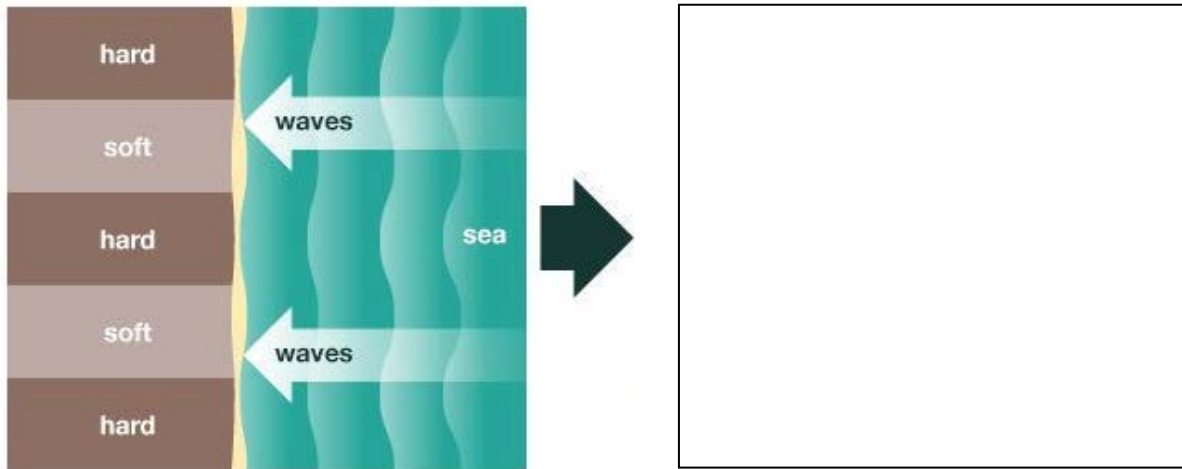


2. The map below shows Start Bay.

- (a) Use the PowerPoint presentation to locate and label the following landforms: Start Point, Blackpool Sands, Slapton Sands, Start Bay.
- (b) Draw and label Skerries Bank.
- (c) Draw and label the coastal road (A379) that links Kingsbridge and Dartmouth.
- (d) Locate and label the settlements of Torcross, Beesands and Hallsands. Just write one label for Hallsands.
- (e) Add a north arrow to the map.



3. The diagram below shows waves approaching a stretch of coastline. Notice that the coastline is made of alternating hard and soft rocks.



(Source: [here](#))

- (a) In the blank box alongside, draw the future coastline to show how headlands and bays have been formed.
 (b) In South Devon, give one example of a headland and one example of a bay.

Headland: _____

Bay: _____

- (c) Describe in your own words the formation of headlands and bays.

4. The photo below shows Start Point.

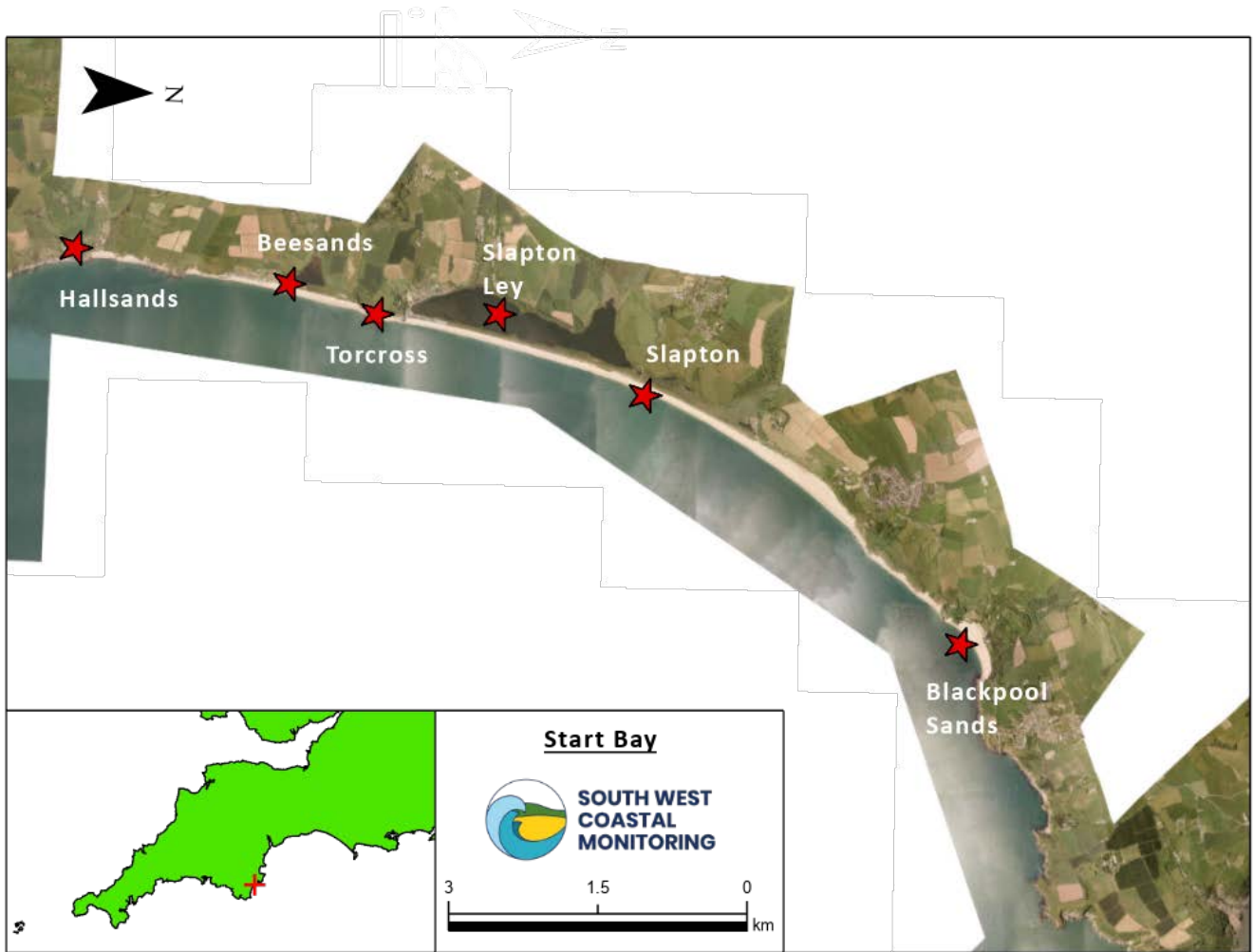
- (a) In what direction is the photo looking? _____
 (b) Locate and label Start Bay.
 (c) Why do you think that a lighthouse has been built at Start Point?



(Source: [here](#))



5. The aerial photo below shows the coastal landscape in Start Bay.



(a) Look closely at the photo. What is the evidence that it was taken in the summer?

(b) How does the width of the beach change from south to north?

(c) Calculate the straight-line distance between Hallsands and Torcross. _____ km

(d) In what direction is Blackpool Sands from Torcross? _____

(e) What evidence would you look for to confirm that Slapton Ley is a freshwater rather than saltwater lake?

6. The photo below shows the village of Torcross and the freshwater lagoon, Slapton Ley.



(Source: [here](#))

(a) Use the PowerPoint maps to give the direction that the photo is looking. _____

(b) Using location arrows, write the following labels alongside the photo:

- Slapton Ley
- Wide shingle beach
- Seawall

(c) Suggest reasons why Torcross is popular with tourists.



7. The photo below shows Blackpool Sands at the northern end of Start Bay. Describe the view to a friend who is visually impaired.



(Source: [here](#))

