

TEST VALLEY LANDSCAPE CHARACTER ASSESSMENT

Hampshire

What is landscape character assessment (LCA)?

LCA is concerned with dividing the landscape into areas of distinct, recognisable and consistent common character, grouping areas of similar character together in character types and areas.

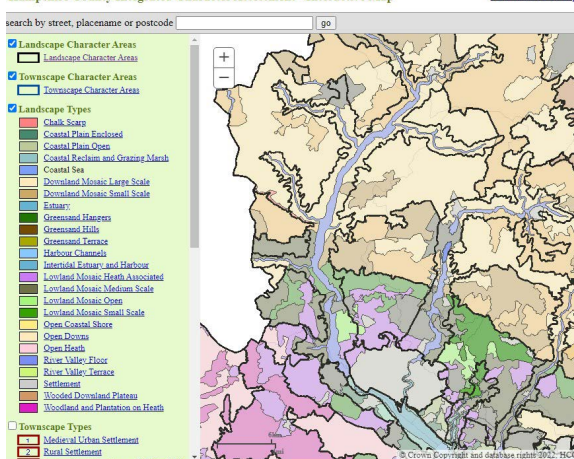
The Test Valley Borough Council (TVBC) study sits within the hierarchy framework of Landscape Character Assessments which cascade down from the national and county character assessments and sits alongside those for AONBs and National Parks.

National Character Areas map

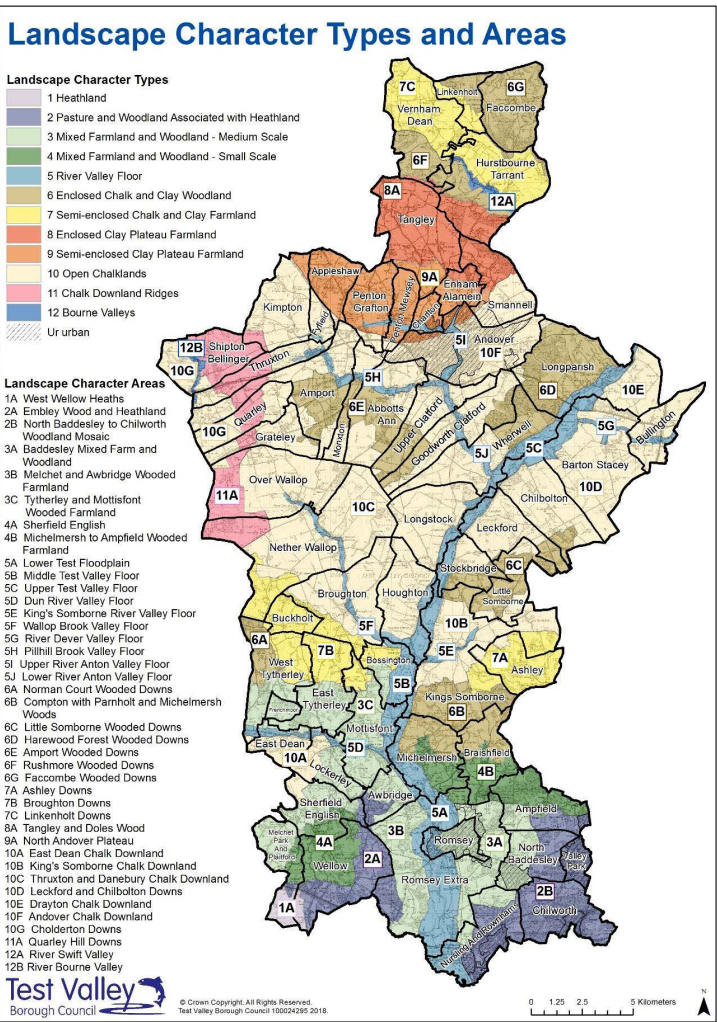


National Character Areas

Hampshire County Integrated Character Assessment - Interactive Map

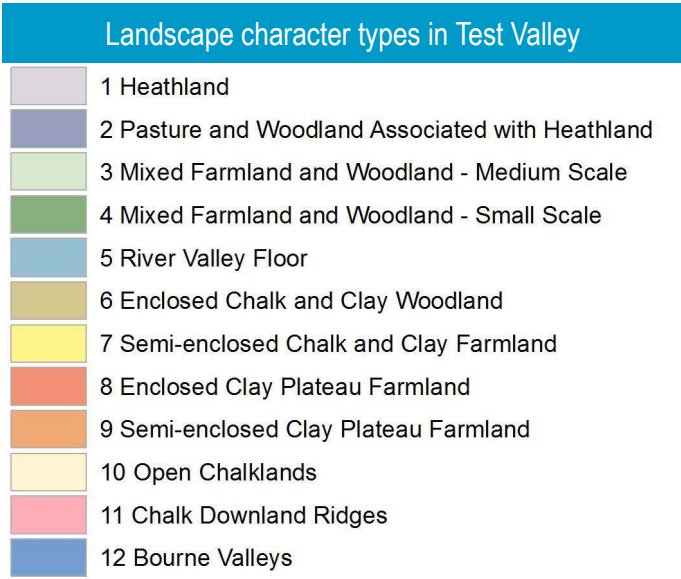


County Landscape Character Assessment

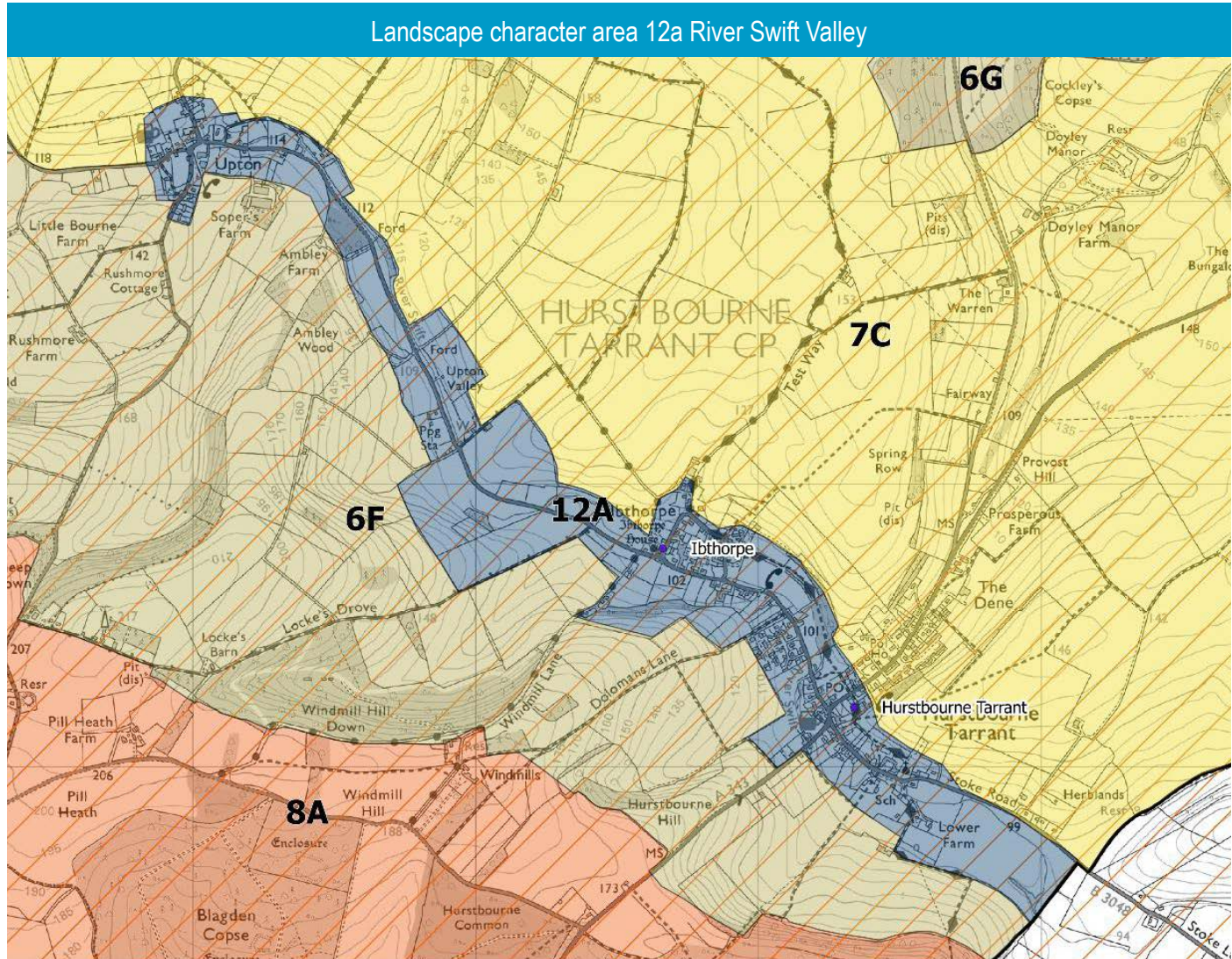


District Landscape Character Assessment (e.g. Test Valley Borough)

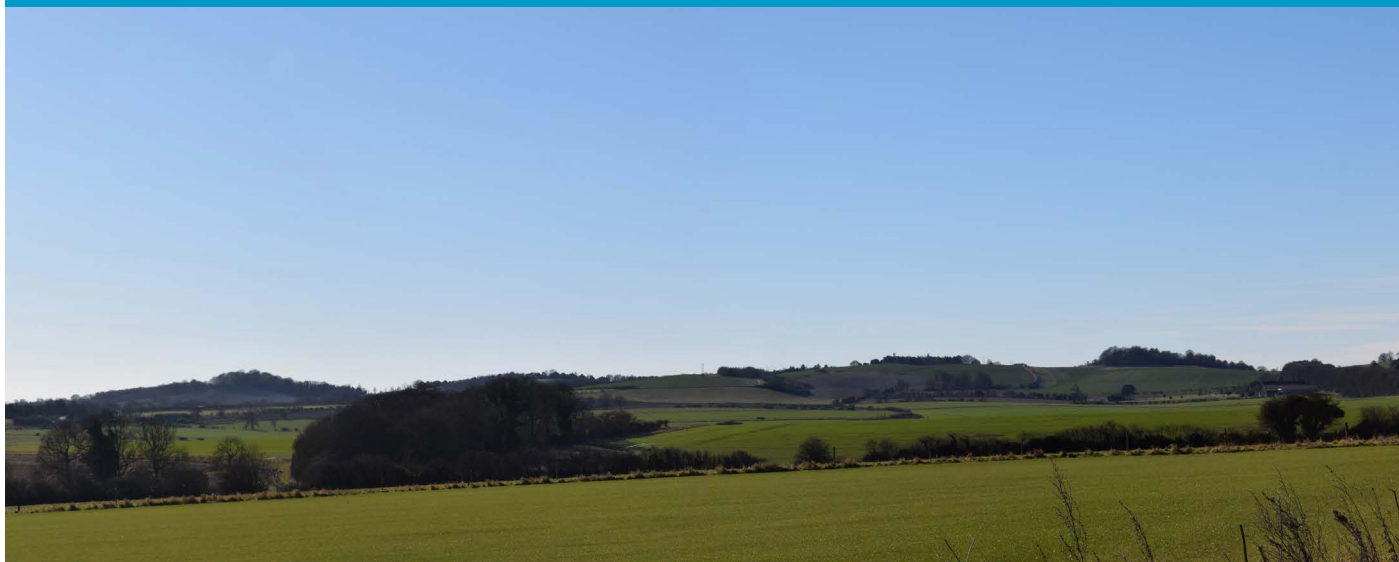
Landscape character types (LCTs) are generic in nature, in that they may occur in different parts of the country, but wherever they occur they share broadly similar combinations of geology, topography, drainage patterns, vegetation, historical land use and settlement pattern, eg river valley floor. In Test Valley there are 12 LCTs.



Landscape character areas (LCAs) are units of landscape, which are geographically specific and have their own individual sense of place. These are particularly useful in planning and management terms so that appropriate policies or actions can be applied at a local level. In Test Valley there are 40 distinctive LCAs.



Long, elevated views are a distinctive and valued characteristic of this part of the Borough



Why is Landscape Character Assessment useful and important, where does it fit into spatial planning?

Government guidance contained within the National Planning Policy Framework (NPPF) makes it clear that the intrinsic character and beauty of the countryside should be recognised and the character of different areas should be taken into account when development or any kind of change is being considered by decision-makers.

Landscape character assessments form part of the evidence base for the Local Plan and provide robust evidence to help guide and assist in spatial planning and development management within the Borough. This is intended to aid in ensuring that the distinctive character of the Borough is retained and change is accommodated in a positive way.

The LCA gives clear guidance on what makes each area distinctive and how this can be respected and enhanced. A significant development of the process in recent years is that 'key valued characteristics' and 'key detractors' are set out in order to distinguish between negative and positive characteristics.

This part of the Borough is characterised by a greater degree of enclosure, a smaller scale and wooded skylines



terrafirma
LANDSCAPE ARCHITECTS

