



# CUMBERLAND STREET HOMEZONE

Portsmouth, Hampshire

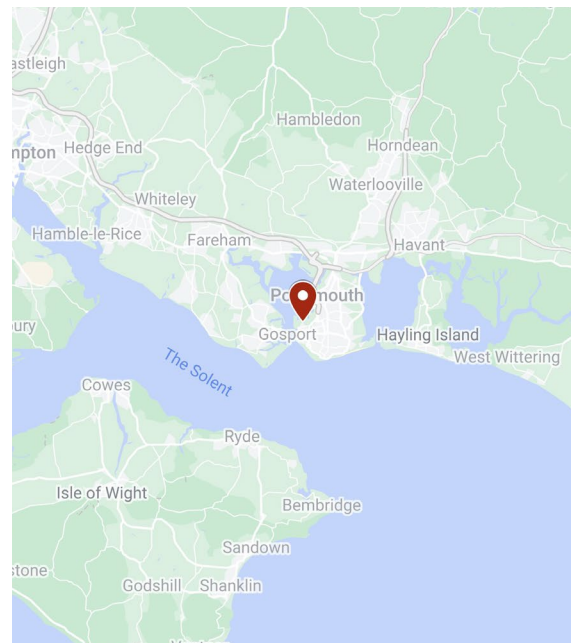


...“The need to improve security and safety” ...“The need to improve the outside environment” ...“More things for young people”...

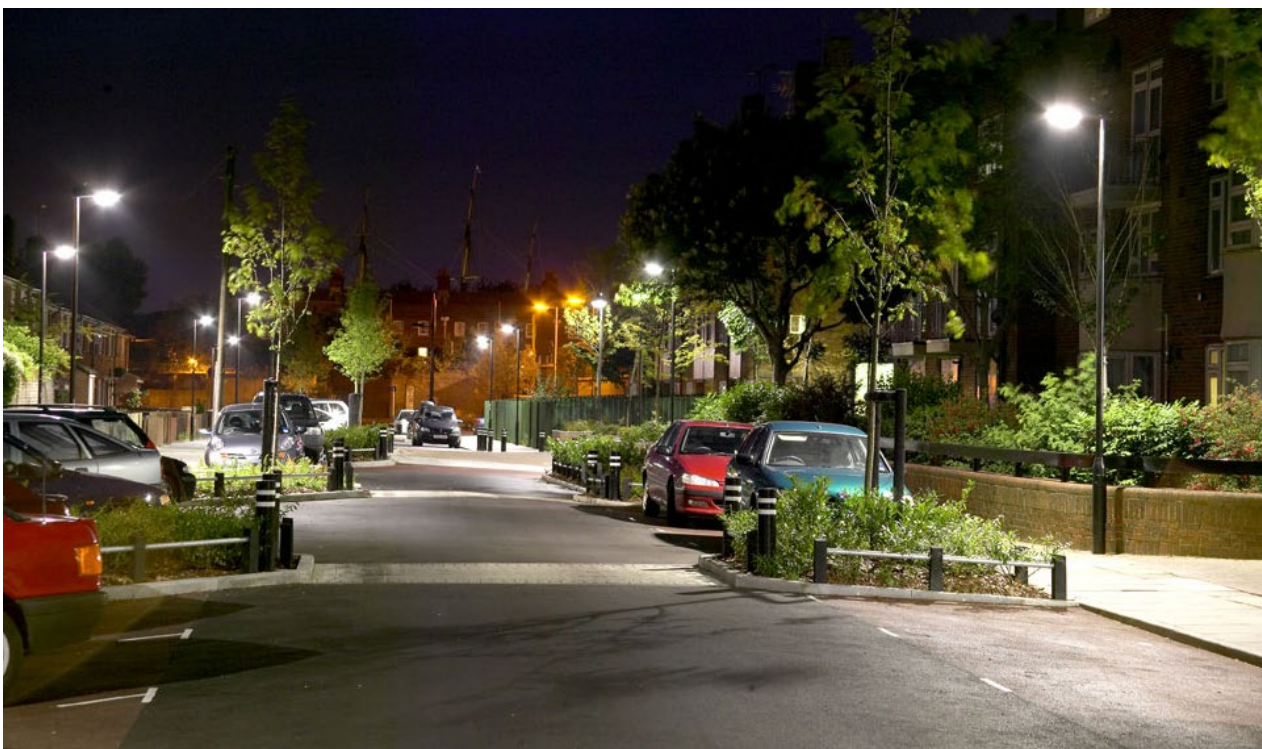
That’s what residents in North Portsea saw as three key issues needing action in their local community area.

A ‘Planning for Real’ community exercise was set up in 1998 by Portsmouth City Council Housing Service who consulted residents through a series of workshops, questionnaires and meetings to understand how they could create the environment the residents were looking for.

The area, know as the ‘Cumberland Street Area’, is predominately Council-owned and backs onto the Naval Dockyard in central Portsmouth.



## CUMBERLAND STREET HOMEZONE Portsmouth, Hampshire



Following the consultation, a scope of works was developed to include:

- A retrofit ‘Home Zone’: traffic calming and environmental improvement work to the street to create an attractive area giving the pedestrians more priority over vehicle and enhancing the image of the area.
- Additional environmental improvements including a new play area, ball court, youth shelter, improved parking and soft landscape.
- Enhanced lighting and security including CCTV and gated access to certain areas.
- A ‘central square’ space outside the existing Community Project shop.

The terra firma Consultancy was appointed by the Housing Service in October 2002 to carry out the design stages of the scheme, throughout which the residents were consulted.

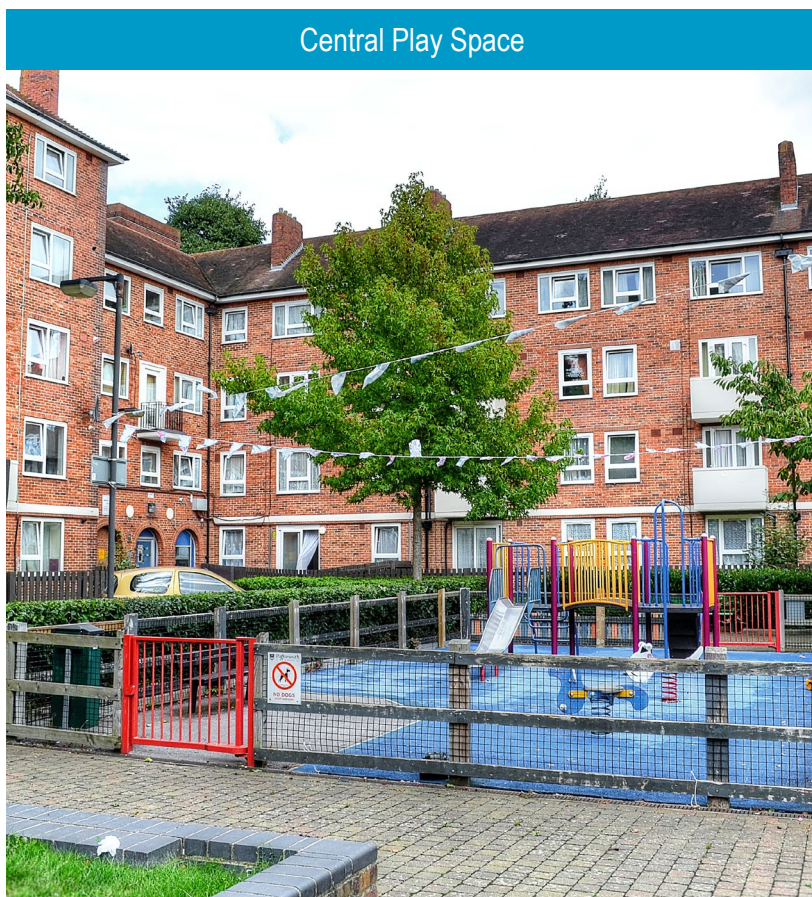
Planning permission was granted in February 2003 and work started on site in October 2003. The scheme was completed in May 2004. The project won a Local Government News Award for ‘Best Homezone’ celebrated with a public event complete with ice cream van and children’s entertainment.



The proposals plans were worked up after extensive study of guidelines produced by advisory bodies, including 'Home Zone Design Guidelines' by the Institute of Highways Incorporated Engineers, 'Movement Access Streets and Spaces' by Hampshire County Council and 'Places, Streets and Movement' by the DETR, amongst others.

The Cumberland Area had some considerable trouble with antisocial behaviour and petty crime. Three additional CCTV cameras were included in the scheme and the lighting across the entire site has been upgraded. Planting to the majority of the scheme was confined to low shrubs and groundcover and tree planting to ensure increased visibility, and therefore security, across the area.

The proposals included a new Ball Court, Youth Shelter and Younger Children's Play area. The Youth shelter is of the same design as those on the Paulsgrove Estate, which were designed in consultation with Hampshire Constabulary.

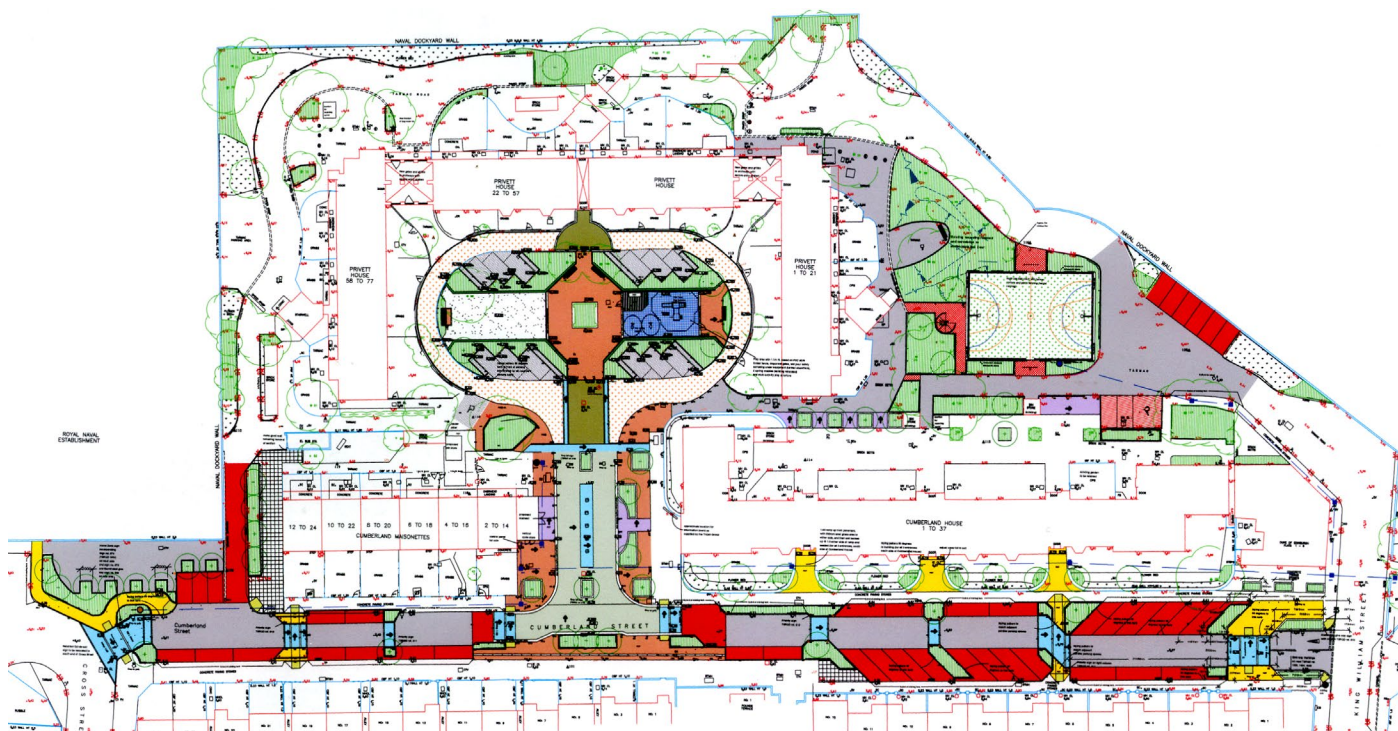


The ball court will be used on a regular basis by the Portsea Youth Project for organised activities in the evenings and is floodlit for this purpose.

The play area in Privett Courtyard is overlooked by many of the flats and with the reduction in tree cover, small children can be watched from newly formed rear gardens and existing balconies.

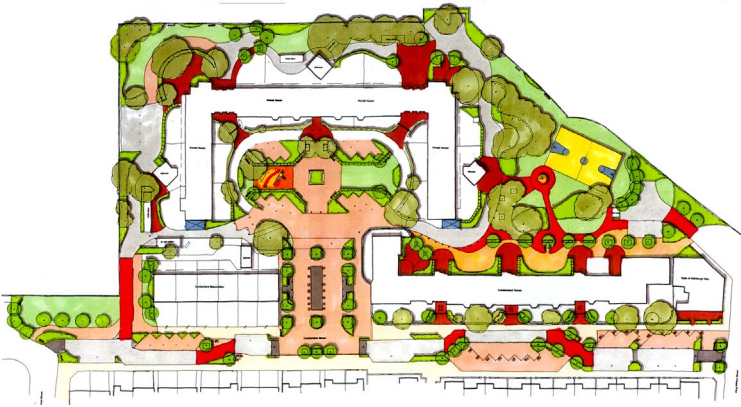
Bespoke homezone signage was designed with a local artist by school children through a series of workshops.

General Arrangement Plan showing remodelled areas in colour.

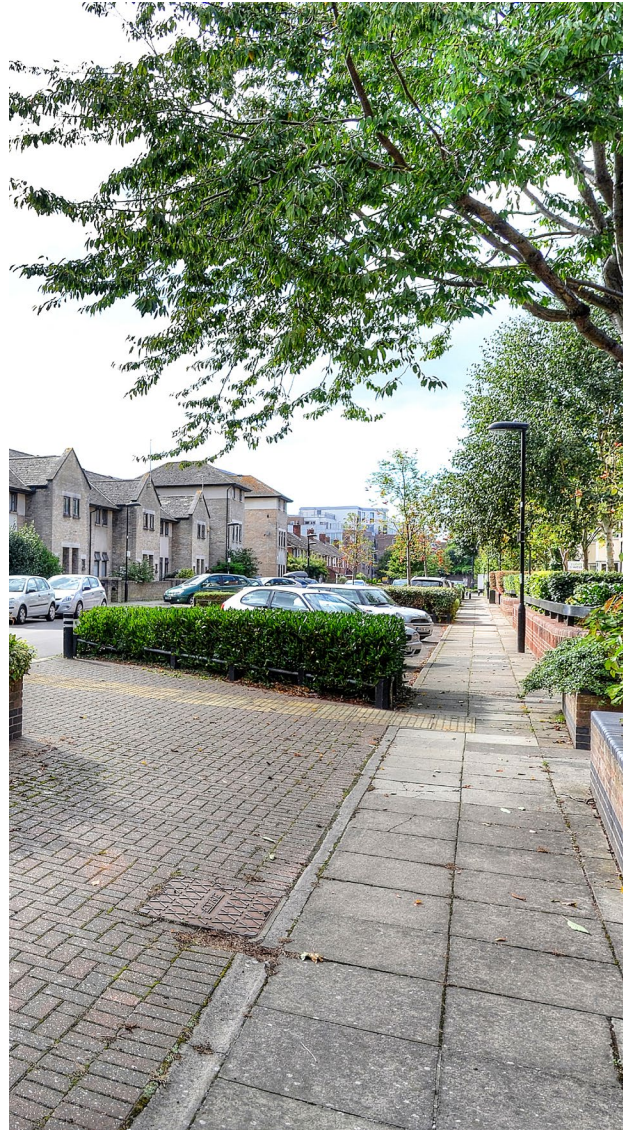




Indicative layout for consultation



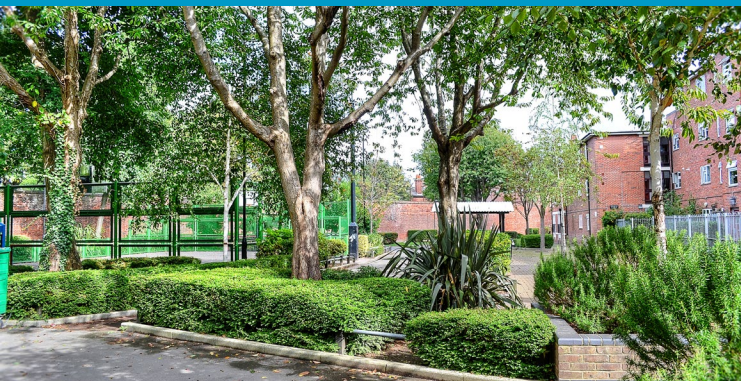
Central courtyard enclosed green space



Traffic calming measures



Ball court set in existing trees



During construction



## Lighting effects in central courtyard



Two designated parking bays are included within the layout and the Disabled Access Officer was consulted over the design and layout of the scheme.

The improvements across the area have assisted in raising the image of the area, increasing the pride and sense of ownership of the residents and improving accessibility and use of the area for all ages, in addition to improving community spirit and the quality of the built environment and biodiversity in the North Portsea area.

## Central courtyard aerial view



## Play area in use



Sign workshops with local children



# terrafirma

LANDSCAPE ARCHITECTS

